



Fagen Friedman & Fulfroost LLP

Public Hearing Trustee Area Map Options



Jonathan Salt, F3 Law
Justin Rich, Cooperative Strategies
November 2, 2021

F3law.com

What is the California Voting Rights Act (“CVRA”)?

- Took effect January 1, 2003
- Prohibits the use of “at-large” elections when such an election system:

“impairs the ability of a protected class to elect candidates of its choice or its ability to influence the outcome of an election....”

(Elections Code § 14027.)



Right to Attorneys' and Expert Fees

CVRA grants a prevailing plaintiff the right to recover reasonable attorneys' fees **AND** expert witness fees.

If district wins, it is **not** granted the same right.

(Elections Code § 14030.).



What is a “By-Trustee Area” Election System?

- *Only safe harbor from a CVRA claim*
- School district is divided into trustee areas
- A governing board member is elected from each trustee area
- Board members are elected **by only the registered voters in the particular trustee area** where the governing board member resides



Current Stage- Draft Maps

- Draw Draft Trustee Area Plans
 - Demographer to use 2020 Census Data and additionally permitted updated data.
 - Population must be as equal “as is practicable” – people, not citizens.
 - Ed Code section 1002: “...trustee areas shall be as nearly equal in population...”
 - A certain amount of deviation may be permitted.



Current Stage – Draft Maps

More Criteria for Consideration

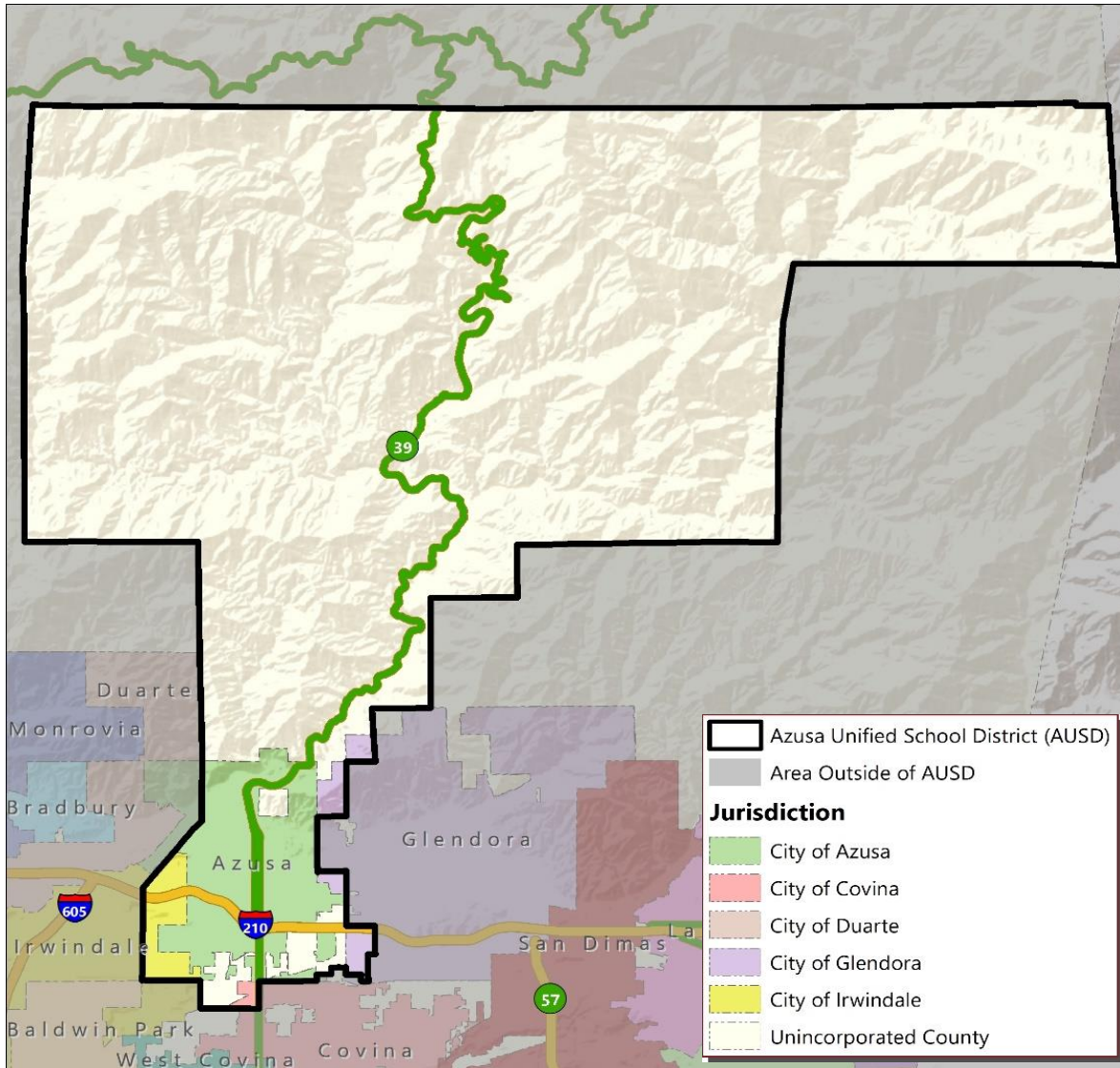
Article 21 of the California Constitution:

- Comply with the U.S. Constitution.
- Achieve population equality as nearly as is practicable.
- Comply with the Federal Voting Rights Act.
- Voting districts shall be geographically contiguous.
- Local *communities of interests*.
- Geographical compactness.
- Cannot favor or discriminate against an incumbent, political candidate or political party.



District's Demographics

2020 Census Data

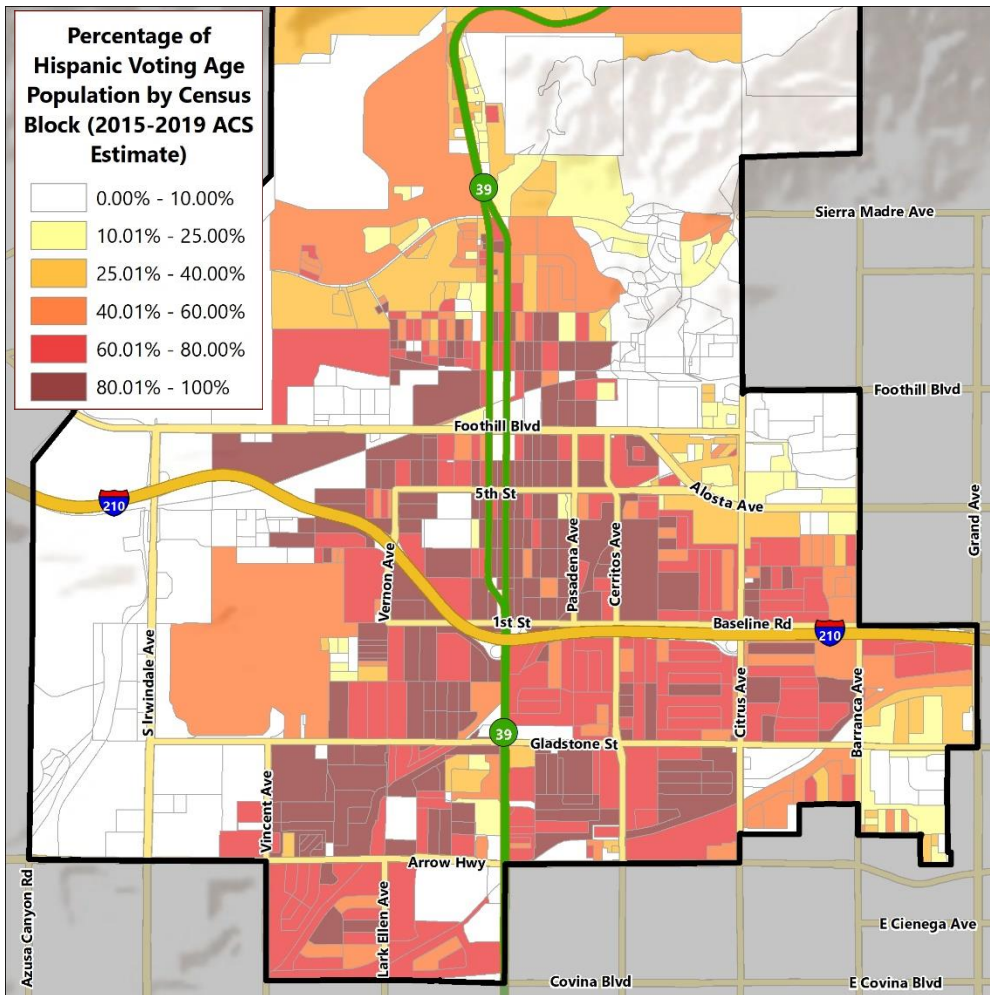


Total Population: **69,804**

Population Age 18+: 54,811

District's Demographics

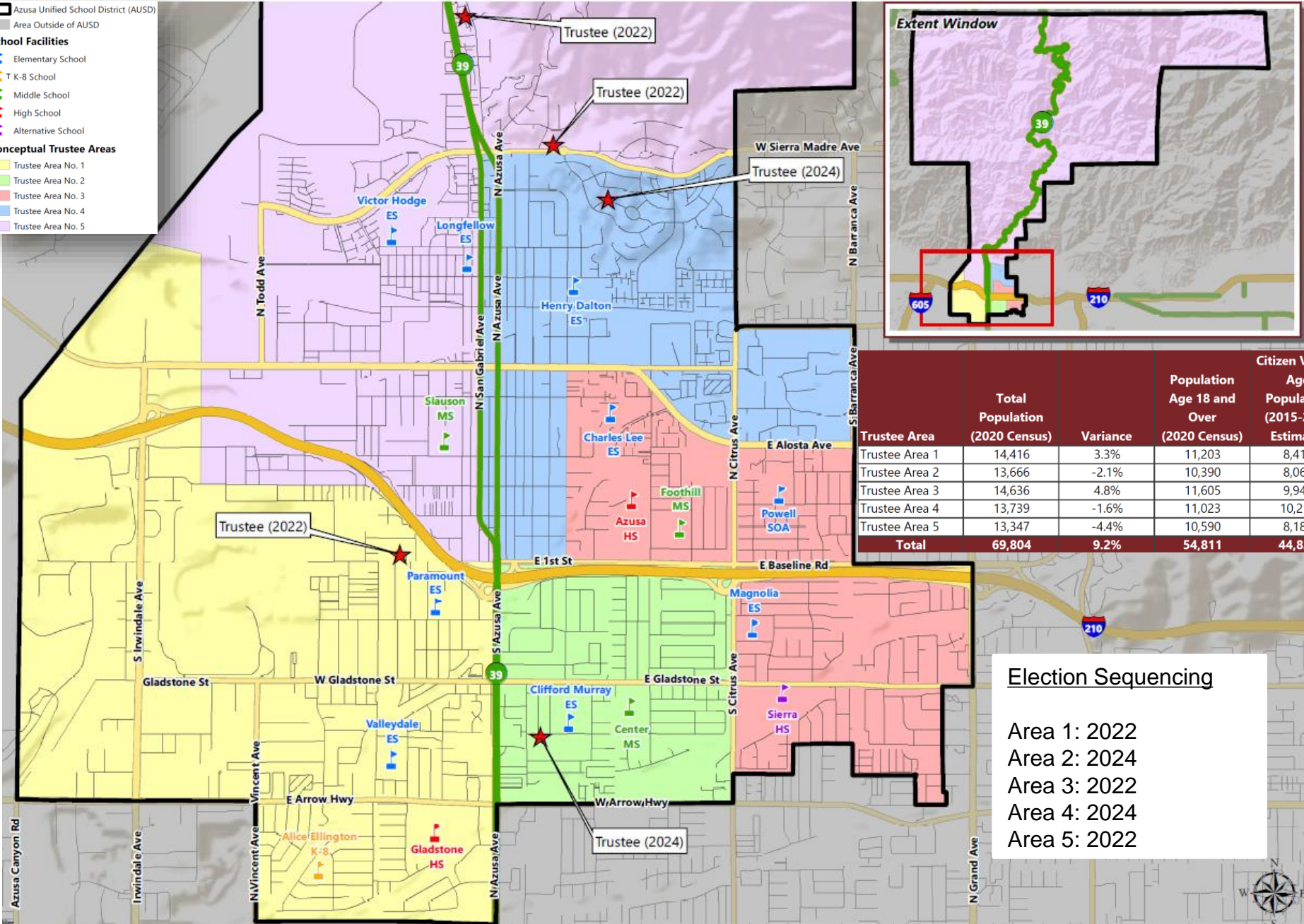
Hispanic Citizen Voting Age Population Estimates



Population	2015-2019 CVAP	
	Total	%
Hispanic/Latino	26,280	58.55%
White	10,964	24.43%
Black / African American	1,580	3.52%
American Indian / Alaska Native	80	0.18%
Asian	5,185	11.55%
Native Hawaiian/ Pacific Islander	71	0.16%
Two or More Races	725	1.62%
Total	44,885	100%

Scenario 1 Map

- Azusa Unified School District (AUSD)
- Area Outside of AUSD
- School Facilities**
- Elementary School
- T K-8 School
- Middle School
- High School
- Alternative School
- Conceptual Trustee Areas**
- Trustee Area No. 1
- Trustee Area No. 2
- Trustee Area No. 3
- Trustee Area No. 4
- Trustee Area No. 5



Trustee Area	Total Population (2020 Census)	Variance	Population Age 18 and Over (2020 Census)	Citizen Voting Age Population (2015-2019 Estimate)
Trustee Area 1	14,416	3.3%	11,203	8,414
Trustee Area 2	13,666	-2.1%	10,390	8,067
Trustee Area 3	14,636	4.8%	11,605	9,940
Trustee Area 4	13,739	-1.6%	11,023	10,214
Trustee Area 5	13,347	-4.4%	10,590	8,185
Total	69,804	9.2%	54,811	44,820

Election Sequencing

Area 1: 2022
 Area 2: 2024
 Area 3: 2022
 Area 4: 2024
 Area 5: 2022



Scenario 1 CVAP Data

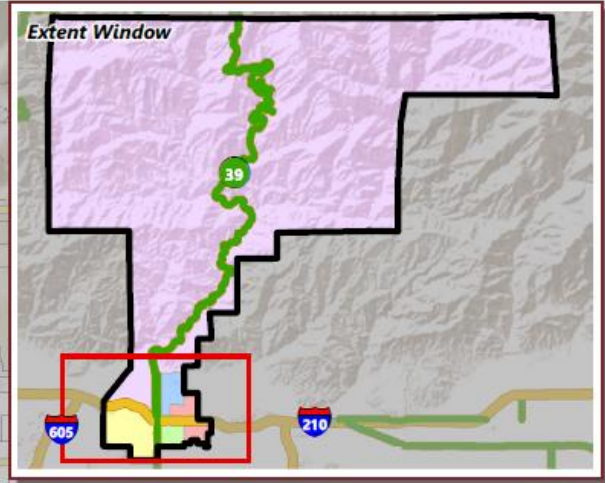
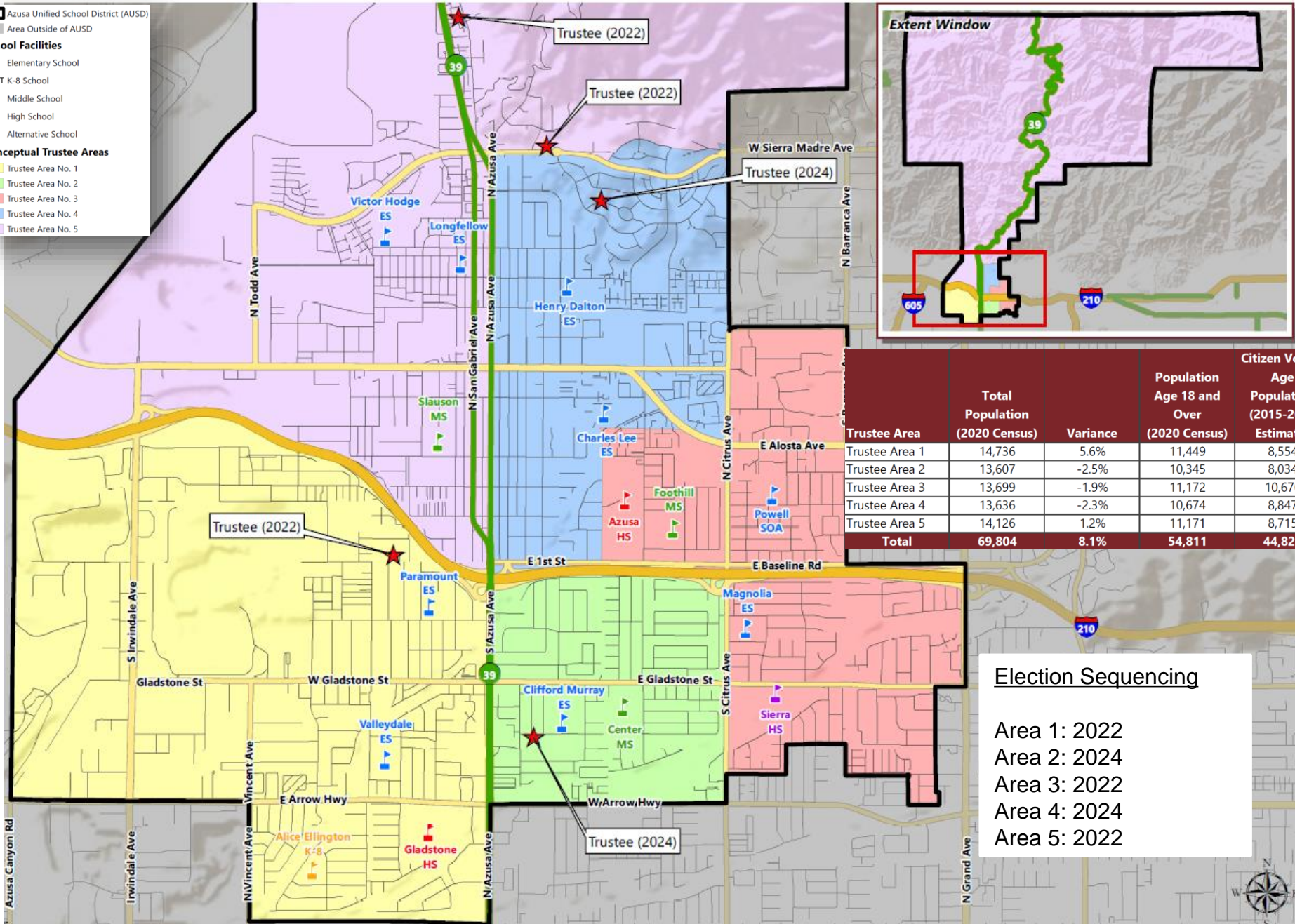
Citizens by Voting Age Population Estimate (2015-2019)

	Trustee Area 1	Trustee Area 2	Trustee Area 3	Trustee Area 4	Trustee Area 5
Population	8,414	8,067	9,940	10,214	8,185
Hispanic/Latino	70.5%	73.5%	55.7%	46.0%	53.4%
White	12.2%	12.5%	30.3%	32.6%	29.3%
Black/ African American	2.1%	3.7%	2.1%	5.6%	4.4%
American Indian/ Alaska Native	0.0%	0.0%	0.6%	0.1%	0.2%
Asian	14.0%	9.9%	9.2%	14.1%	11.3%
Native Hawaiian/ Other Pacific Islander	0.3%	0.0%	0.0%	0.2%	0.0%
Other	0.0%	0.0%	0.0%	0.0%	0.0%
Two or More Races	1.0%	0.5%	2.1%	1.4%	1.4%



Scenario 2 Map

- Azusa Unified School District (AUSD)
- Area Outside of AUSD
- School Facilities**
- Elementary School
- T K-8 School
- Middle School
- High School
- Alternative School
- Conceptual Trustee Areas**
- Trustee Area No. 1
- Trustee Area No. 2
- Trustee Area No. 3
- Trustee Area No. 4
- Trustee Area No. 5



Trustee Area	Total Population (2020 Census)	Variance	Population Age 18 and Over (2020 Census)	Citizen Voting Age Population (2015-2019 Estimate)
Trustee Area 1	14,736	5.6%	11,449	8,554
Trustee Area 2	13,607	-2.5%	10,345	8,034
Trustee Area 3	13,699	-1.9%	11,172	10,670
Trustee Area 4	13,636	-2.3%	10,674	8,847
Trustee Area 5	14,126	1.2%	11,171	8,715
Total	69,804	8.1%	54,811	44,820

Election Sequencing

Area 1: 2022
 Area 2: 2024
 Area 3: 2022
 Area 4: 2024
 Area 5: 2022



Scenario 2 CVAP Data

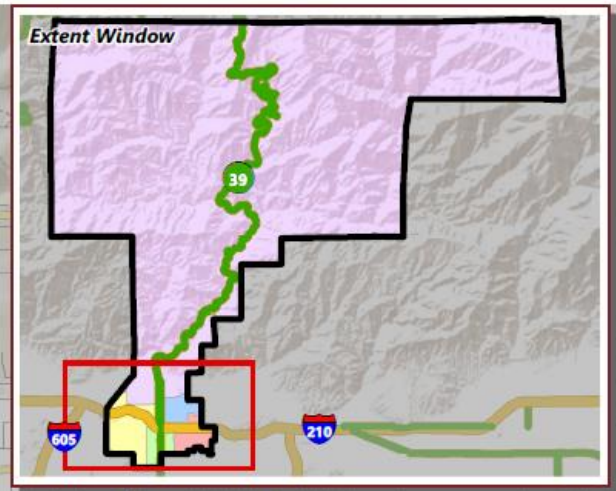
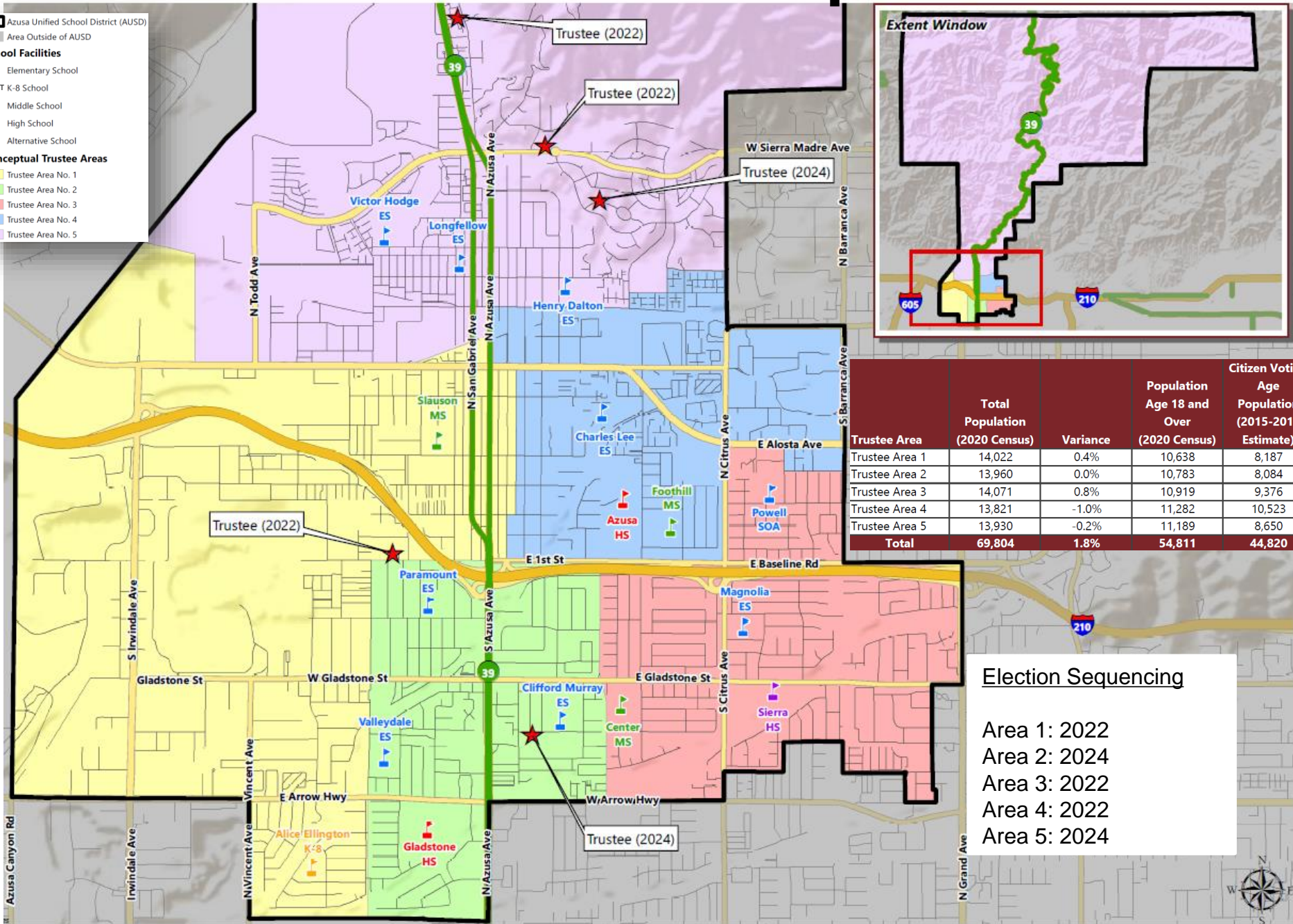
Citizens by Voting Age Population Estimate (2015-2019)

	Trustee Area 1	Trustee Area 2	Trustee Area 3	Trustee Area 4	Trustee Area 5
Population	8,554	8,034	10,670	8,847	8,715
Hispanic/Latino	70.2%	73.5%	47.3%	52.5%	55.8%
White	12.0%	12.4%	37.2%	26.5%	28.1%
Black/ African American	2.5%	3.7%	3.1%	4.1%	4.7%
American Indian/ Alaska Native	0.0%	0.0%	0.6%	0.0%	0.2%
Asian	14.1%	9.9%	9.0%	16.1%	9.9%
Native Hawaiian/ Other Pacific Islander	0.3%	0.0%	0.1%	0.1%	0.0%
Other	0.0%	0.0%	0.0%	0.0%	0.0%
Two or More Races	1.0%	0.5%	2.7%	0.6%	1.3%



Scenario 3 Map

- Azusa Unified School District (AUSD)
 - Area Outside of AUSD
- School Facilities**
- Elementary School
 - T K-8 School
 - Middle School
 - High School
 - Alternative School
- Conceptual Trustee Areas**
- Trustee Area No. 1
 - Trustee Area No. 2
 - Trustee Area No. 3
 - Trustee Area No. 4
 - Trustee Area No. 5



Trustee Area	Total Population (2020 Census)	Variance	Population Age 18 and Over (2020 Census)	Citizen Voting Age Population (2015-2019 Estimate)
Trustee Area 1	14,022	0.4%	10,638	8,187
Trustee Area 2	13,960	0.0%	10,783	8,084
Trustee Area 3	14,071	0.8%	10,919	9,376
Trustee Area 4	13,821	-1.0%	11,282	10,523
Trustee Area 5	13,930	-0.2%	11,189	8,650
Total	69,804	1.8%	54,811	44,820

Election Sequencing

Area 1: 2022
 Area 2: 2024
 Area 3: 2022
 Area 4: 2022
 Area 5: 2024



Scenario 3 CVAP Data

Citizens by Voting Age Population Estimate (2015-2019)

	Trustee Area 1	Trustee Area 2	Trustee Area 3	Trustee Area 4	Trustee Area 5
Population	8,187	8,084	9,376	10,523	8,650
Hispanic/Latino	72.7%	71.4%	65.4%	45.6%	43.9%
White	13.0%	12.2%	22.1%	35.9%	33.3%
Black/ African American	3.2%	3.1%	2.2%	4.8%	4.5%
American Indian/ Alaska Native	0.0%	0.0%	0.5%	0.1%	0.2%
Asian	10.0%	12.5%	8.8%	10.9%	16.9%
Native Hawaiian/ Other Pacific Islander	0.0%	0.3%	0.0%	0.2%	0.0%
Other	0.0%	0.0%	0.0%	0.0%	0.0%
Two or More Races	1.1%	0.5%	1.0%	2.5%	1.2%



Final Thoughts

- Does not change overall District boundaries
- Does not change school attendance boundaries
- **Does not** change how the District is governed:
 - Each Board member, regardless of the trustee area in which he/she resides, still owes fiduciary duty to entire District
 - Still one District with common goals and challenges!!!



Schedule

August 17, 2021	Pre-Map Public Hearing #1
September 7, 2021	Pre-Map Public Hearing #2
<i>2020 Census Data released; Draft map options prepared for public review</i>	
November 2, 2021	Map Public Hearing #1
November 16, 2021	Map Public Hearing #2
December 14, 2021	Map Public Hearing #3



District

Our Schools ▾

**Azusa**
Unified School District

Search...



Translate ▾ Staff ▾



Home > Board of Education > By-Trustee Election (CA Voting Rights Act) > By-Trustee Election

MAP OPTIONS FOR CVRA

Dear AUSD Community:

As the District continues to move through the process of transitioning to "by-Trustee-area" elections under the legal requirements of the California Voting Rights Act (CVRA), we have reached a critical point. The District is releasing three map options to the community for study and input. All three of the map options being considered meet the legal requirements outlined in CVRA.

The District is providing multiple in-person opportunities to the community to review and provide feedback over the next two months before the Board of Education votes on December 14, 2021 for a map that will be put into effect for the November 2022 Board elections.

This release of map options comes at the end of the "Pre-Map" period wherein the District engaged the community with two public hearings to solicit input before drawing map options.

Each map option for consideration:

1. Meets the equal population requirement (that each trustee area have equal population with up to a 10% variance);
2. Increases the voting power of the largest protected classes in the District by Citizen Voting Age Population (CVAP/eligible voters) in at least one Trustee Area based on up-to-date CVAP statistics compared to District-wide averages;
3. Complies with the Federal Voting Rights Act;
4. Respects communities of interest as much as possible;
5. Is compact and contiguous as much as possible; and
6. Follows man-made and natural geographic features as much as possible.

Upcoming Hearing Schedule

November 2, 2021 – 1st Public Hearing regarding Map Options during the Governing Board meeting at the District Office Board Room (546 S. Citrus Ave., Azusa, CA 91702). Zoom attendance is also available.

NOTICE OF PUBLIC HEARING

AZUSA UNIFIED SCHOOL DISTRICT

NOTICE IS HEREBY GIVEN that a public hearing will be held by the Governing Board of the Azusa Unified School District as part of the transition to a by-trustee area election system to receive community comments and public testimony concerning proposed trustee voting area plans.

YOU WILL THEREFORE TAKE NOTICE THAT a public hearing will be held before the Governing Board of the District as follows:

Date: November 2, 2021

Place: The Board of Education meeting will be held at the Administration Office
546 S. Citrus Avenue.

Members of the public may also attend by teleconference at:
<https://us02web.zoom.us/j/89051418951> or +1-669-900-9128 with meeting code 890 5141 8951.

Time: 7:00 p.m.

The public hearing shall be in accordance with California Elections Code section 10010. Please contact AUSD Communications, at (626)858-

