



Azusa
Unified School District

California School Dashboard

What is the California Dashboard?

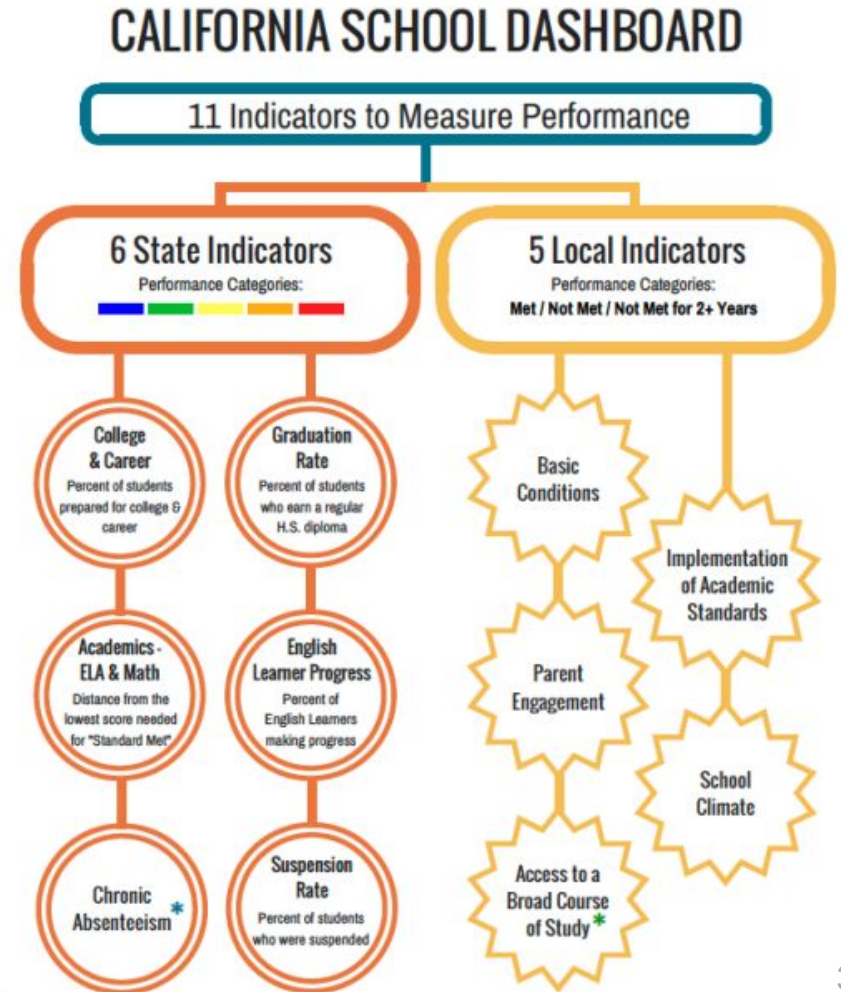
- ▷ Dashboard reports on state and local measures
- ▷ California's accountability system, which is based on the eight state priority areas of the Local Control Funding Formula (LCFF)
- ▷ Online tool that shows parents and communities how well schools and districts are meeting the needs of all students



State Measures

Six State Measures

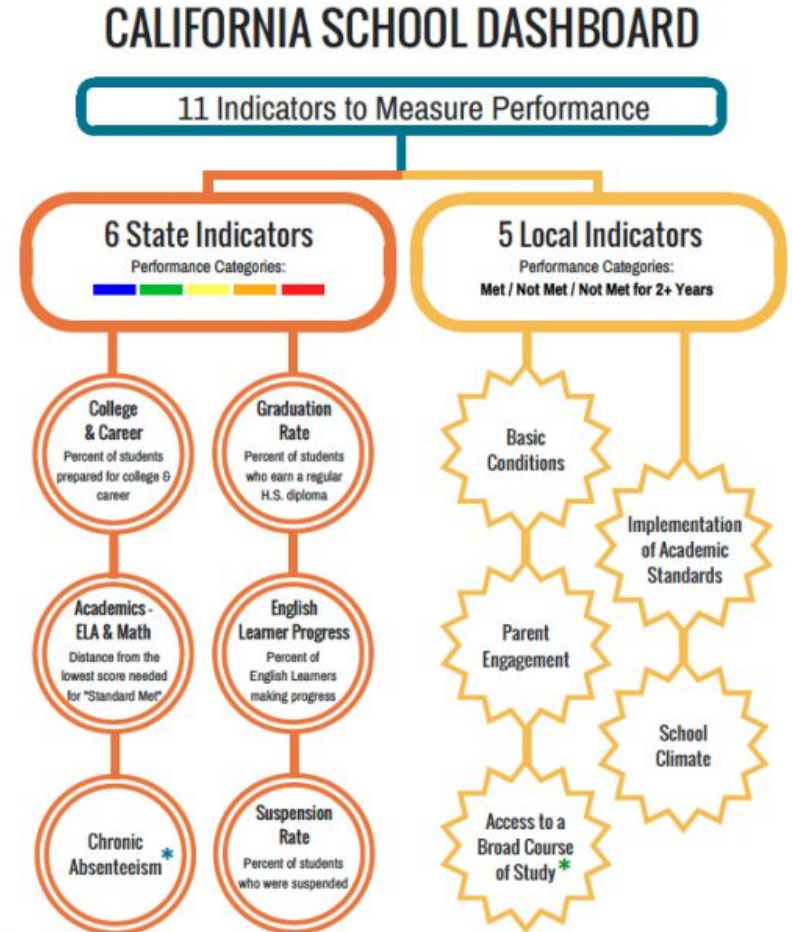
1. Academic (grades three through eight and grade eleven)
 - a. English Language Arts/Literacy
 - b. Mathematics
2. Chronic Absenteeism (K-12th Grade)
3. College/Career (high school only)
4. English Learner Progress (Grades 1-12)
5. Graduation Rate (high school only)
6. Suspension Rate



Local Measures

Local measures are based on information collected by districts and include:

- Access to Courses
- Basic Conditions
- Implementation of Academic Standards
- Parent Involvement and Family Engagement
- School Climate Surveys
- Student safety, connection to the school
- Teacher assignments, safe and clean buildings, instructional materials for all students



Prior Dashboard

- In prior years, the Dashboard reported performance levels through the use of colors: blue, green, yellow, orange, and red
- These performance levels were determined using two years of data utilizing current year performance and the difference from prior year to show growth or decline.



How is Performance Reported on the Dashboard?

- ▶ For the 2022 Dashboard, the California Department of Education will report the most current year of data.
- ▶ Performance levels using one of five status levels (Very High, High, Medium, Low, and Very Low) will be reported for the following state measures:
 - Academic
 - English Learner Progress
 - Graduation Rate



How is Performance Reported on the Dashboard?

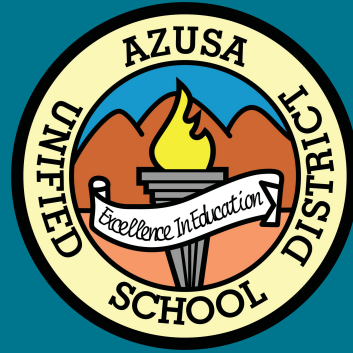
- ▶ The Status level labels are reversed for both:
 - Chronic Absenteeism
 - Suspension Rate
- ▶ The goal of these measures is to have a low rate of student absence and suspension
- ▶ Reversed Status Levels



How to View Performance of a School or District on the 2022 Dashboard

- The Dashboard can be viewed on the CDE California School Dashboard and System of Support web page, at <https://www.cde.ca.gov/ta/ac/cm/>
- To see the results for a district or school, type the name into the search bar
- Once you select a school or district, its overall performance on state measures will be displayed





AUSD

California Dashboard Results

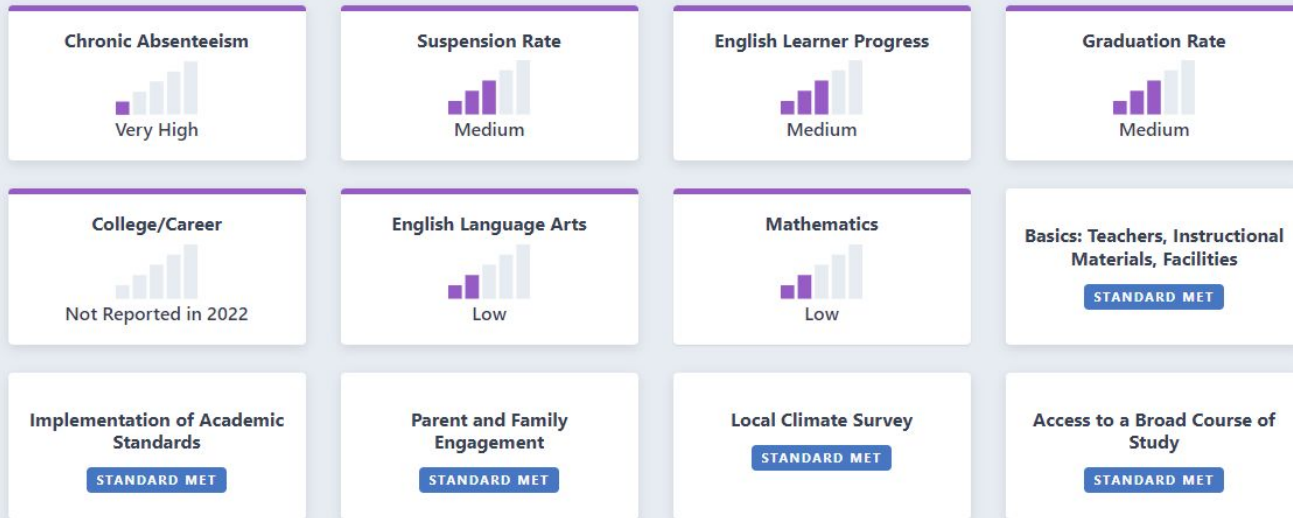
Azusa Unified

Explore the performance of Azusa Unified under California's Accountability System.

[Generate PDF Report](#)
[View All Schools](#)
[View Additional Reports](#)

 2022
 ⌵

Due to the COVID-19 pandemic, state law allows the 2022 Dashboard to only display the most current year of data (also known as Status). For this year only, performance levels will be reported using one of five Status levels (ranging from Very High, High, Medium, Low, and Very Low) for state measures. Please note that the Status levels associated with the Chronic Absenteeism and Suspension Rate Indicators are reversed (ranging from Very Low, Low, Medium, High, and Very High). Information regarding this year's Dashboard data is available within the [Dashboard Communications Toolkit](#).

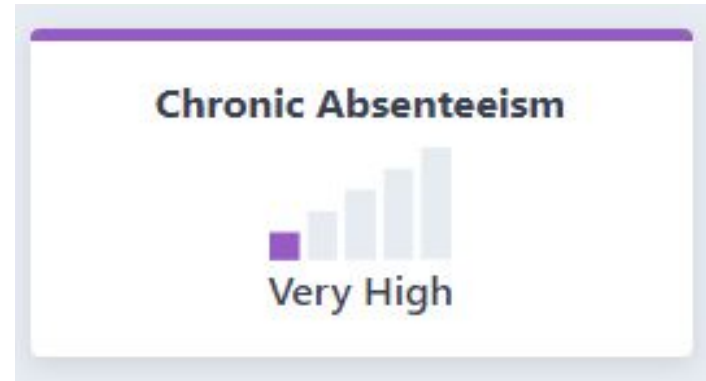


AUSD and State Comparison - Chronic Absenteeism

AUSD



State of California



AUSD and State Comparison - Suspension Rate

AUSD



State of California



AUSD and State Comparison - English Learner Progress

AUSD



State of California

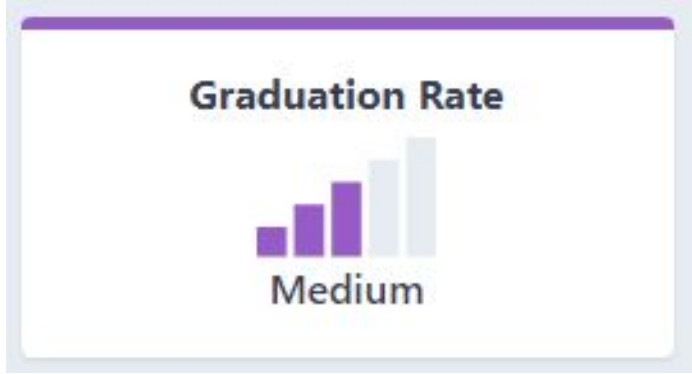


AUSD and State Comparison - Graduation Rate

AUSD



State of California



AUSD and State Comparison - English Language Arts

AUSD

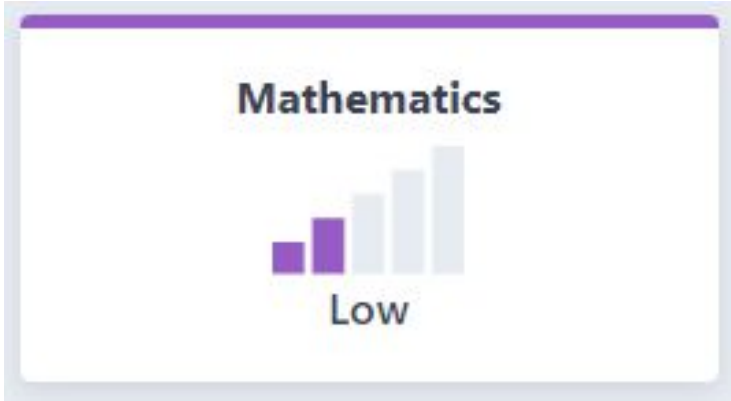


State of California

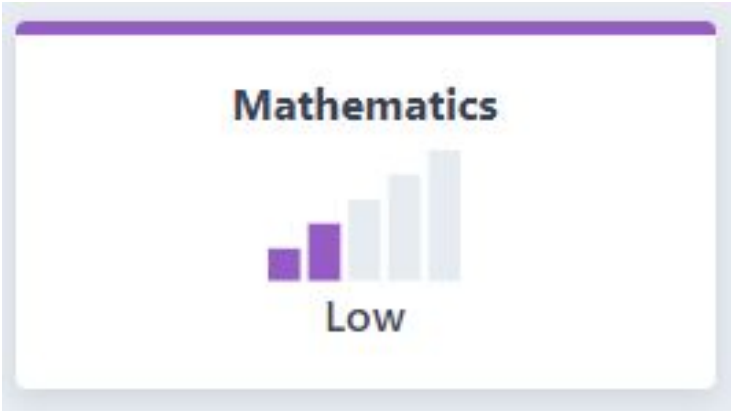


AUSD and State Comparison - Mathematics

AUSD



State of California





THANK YOU

Questions?