



**Azusa**  
Unified School District

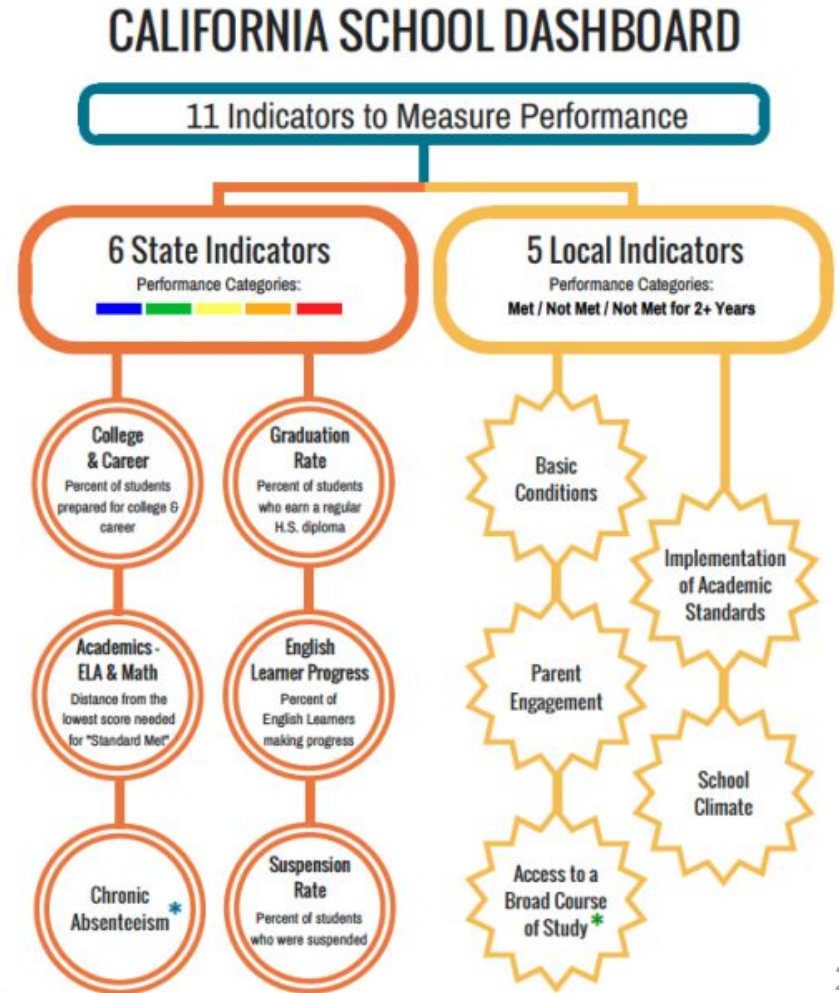
---

# California School Dashboard

# State Measures

## Six State Measures

1. Academic (grades 3-8 and grade 11)
  - a. English Language Arts/Literacy
  - b. Mathematics
2. Chronic Absenteeism (grades k-12)
3. College/Career (high school only)
4. English Learner Progress (grades 1-12)
5. Graduation Rate (high school only)
6. Suspension Rate

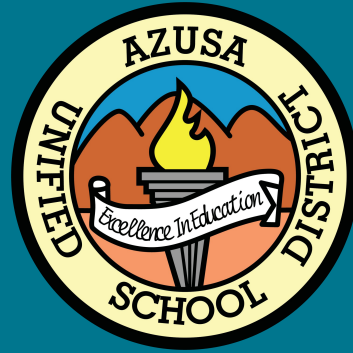


# How are Colors Determined?

Performance is based on two factors:

- Current year data for the measure
- Difference between current year and prior year data

Level	Declined Significantly	Declined	Maintained	Increased	Increased Significantly
Very High	Green	Green	Blue	Blue	Blue
High	Green	Green	Green	Green	Blue
Medium	Yellow	Yellow	Yellow	Green	Green
Low	Orange	Orange	Orange	Yellow	Yellow
Very Low	Red	Red	Red	Orange	Orange



# AUSD

## California Dashboard 2024

# Azusa Unified

Explore the performance of Azusa Unified under California's Accountability System.

[Generate PDF Report](#)

[View All Schools](#)

[View Additional Reports](#)

2024

Chronic Absenteeism



Yellow

Suspension Rate



Green

English Learner Progress



Red

Graduation Rate



Yellow

College/Career



Orange

English Language Arts



Orange

Mathematics



Orange

Basics: Teachers, Instructional Materials, Facilities

STANDARD MET

Implementation of Academic Standards

STANDARD MET

Parent and Family Engagement

STANDARD MET

Local Climate Survey

STANDARD MET

Access to a Broad Course of Study

STANDARD MET

# AUSD and State Comparison - Chronic Absenteeism

AUSD



State of California



# AUSD and State Comparison - Suspension Rate

AUSD



State of California



# AUSD and State Comparison - English Learner Progress

AUSD



State of California





# AUSD and State Comparison - Graduation Rate

AUSD



State of California



# AUSD and State Comparison - English Language Arts

AUSD




State of California



# AUSD and State Comparison - Mathematics

AUSD


**Mathematics**



Orange

State of California

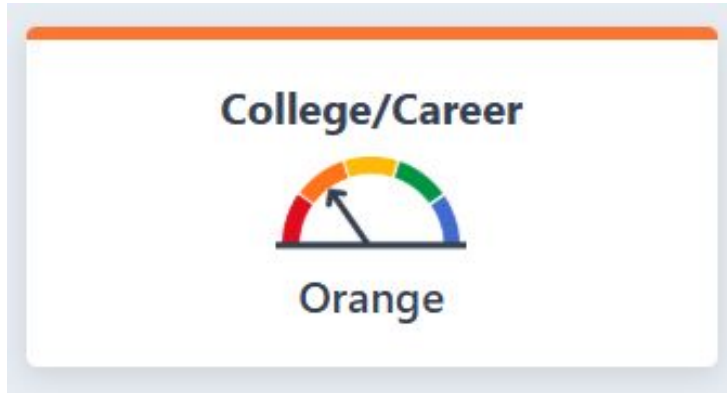
**Mathematics**



Orange

# AUSD and State Comparison - College/Career

AUSD



State of California



School	Suspension Rate	Chronic Absenteeism	ELA	Math	ELPI
Dalton	-1%	1%	2%	12%	-4%
Hodge	-1%	-9%			-2%
Lee	-1%	-15%		11%	
Magnolia	-2%	-5%	7%		-20%
Murray	-5%	-8%	-10%		-30%
Paramount	-1%	-6%	5%		
Valleydale	-11%	-11%			-5%
Gladstone MS	8%	24%	31%	15%	15%

School	Suspension Rate	Graduation Rate	ELA	Math	ELPI
Azusa HS	-1%	4%	6%	7%	-13%
Sierra HS	-1%	11%	3%		N/A



**THANK YOU**

Questions?