

# MODEL 3 (One TK-8)

## ELEMENTARY SCHOOLS

School	Future Type	Max Capacity
✓ Valleydale (DI*)	TK-8	724 students
✓ Dalton	TK-5	489 students
✓ Hodge	TK-5	753 students
✓ Magnolia	TK-5	632 students
✓ Murray	TK-5	867 students
✓ Paramount	TK-5	687 students
✓ Powell	TK-5	367 students
✗ Ellington	Closed	456 students
✗ Lee	Closed	606 students

2022-23 Max Capacity: **4519 students**  
 2022-23 Projected Enrollment: **3331 students**

**73.71% Capacity**

\*DI = Dual Immersion

## MIDDLE SCHOOLS

School	Future Type	Max Capacity
✓ Gladstone HS*	6-8 (MYP**)	1908 students
✗ Center	Closed	1083 students
✗ Foothill	Closed	1269 students
✗ Slauson	Closed	1224 students

2022-23 Max Capacity: **1908 students**  
 2022-23 Projected Enrollment: **1417 students**

**74.27% Capacity**

\*New middle school at the Gladstone High School campus

\*\*MYP = Middle Years Programme

## HIGH SCHOOL

School	Future Type	Max Capacity
✓ Azusa HS*	9-12	2124 students

2022-23 Max Capacity: **2124 students**  
 2022-23 Projected Enrollment: **2022 students**

**95.20% Capacity**

\*New high school at the Azusa High School campus

# MODEL 3 (Two TK-8)

## ELEMENTARY SCHOOLS

School	Future Type	Max Capacity
✓ Valleydale (DI*)	TK-8	724 students
✓ Dalton	TK-5	489 students
✓ Hodge (PYP & MYP**)	TK-8	753 students
✓ Magnolia	TK-5	632 students
✓ Murray	TK-5	867 students
✓ Paramount	TK-5	687 students
✓ Powell	TK-5	367 students
✗ Ellington	Closed	456 students
✗ Lee	Closed	606 students

2022-23 Max Capacity: **4519 students**  
 2022-23 Projected Enrollment: **3411 students**

**75.48% Capacity**

\*DI = Dual Immersion

\*\*PYP = Primary Years Programme, MYP = Middle Years Programme

## MIDDLE SCHOOLS

School	Future Type	Max Capacity
✓ Gladstone HS*	6-8	1908 students
✗ Center	Closed	1083 students
✗ Foothill	Closed	1269 students
✗ Slauson	Closed	1224 students

2022-23 Max Capacity: **1908 students**  
 2022-23 Projected Enrollment: **1337 students**

**70.07% Capacity**

\*New middle school at the Gladstone High School campus

## HIGH SCHOOL

School	Future Type	Max Capacity
✓ Azusa HS*	9-12	2124 students

2022-23 Max Capacity: **2124 students**  
 2022-23 Projected Enrollment: **2022 students**

**95.20% Capacity**

\*New high school at the Azusa High School campus

## Costs and Considerations

DI estimated costs for Valleydale TK-8: \$45,000

- \$30,000 - Instructional Materials/Library
- \$12,000 - Professional Learning
- \$3,000 - Subs/Extra Hours

IB estimated costs: \$110,500

- \$71,250 - Curriculum and Fees
- \$16,150 - Professional Learning
- \$19,000 - Teacher Extra hours
- \$4,100 - Subs/Extra Hours

MYP estimated costs at one Middle School: \$126,400

- \$10,050 - MYP Annual fee
- \$10,000 - Coordinator Training
- \$4,000 - Initial Application Fees
- \$20,000 - IB Coordinator (one period of release time @ 20%)
- \$10,000 - Align Curriculum and Instruction to IB Framework
- \$55,350 - Professional Learning
- \$17,000 - Subs/Extra Hours

PYP/MYP estimated costs for Hodge TK-8: \$92,370

- \$8,520 - PYP Annual Fee
- \$10,050 - MYP Annual Fee
- \$10,000 - Coordinator Training
- \$4,000 - Initial Application Fees

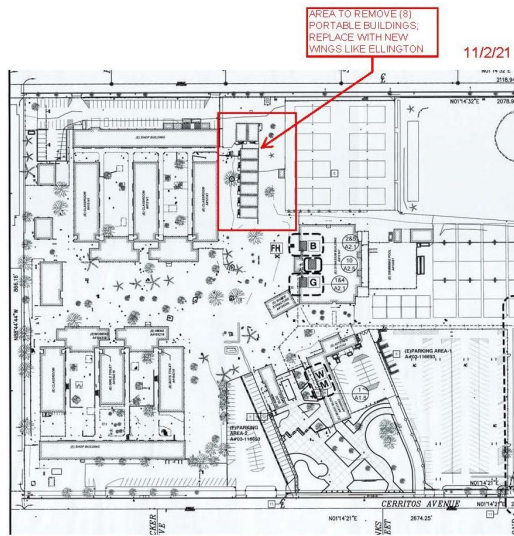
- \$37,800 - Teacher Professional Learning
- \$12,000 - Subs/Extra Hours
- \$10,000 - Align Curriculum and Instruction to IB Framework

Transportation estimated costs: \$2,845,800

- \$465 average cost of a route (pick up and drop off)
- 34 routes
  - Maximum of 52 students per bus
  - 17 routes in the morning and 17 routes in the afternoon

### Azusa High School Portables

- Option 1: 2 sets of Ellington-style modules with 8 rooms: \$4,500,000
- Option 2: Repurpose existing Ellington modules (9 rooms and 1 restroom): \$3,000,000



AZUSA HIGH SCHOOL